

# House and Land Package



ELWOOD RISE

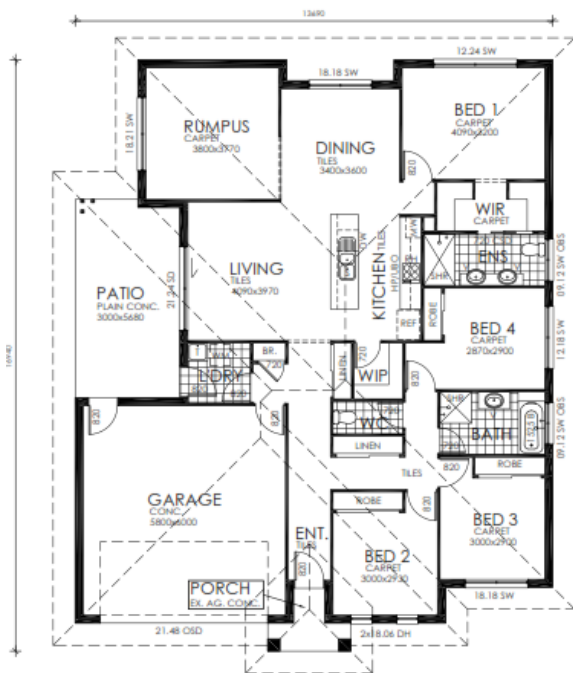


## Milan 212 Metro

Lot no. 64

Lot size: 3005m<sup>2</sup>

# \$495,545\*



- Total package price inclusive of site cost allowances, site sewerage, street boundary fencing and front garden landscaping in accordance with the Elwood Rise Housing Design Guidelines.
- Raised portico, stained timber entrance door, separate rumpus room.
- Walk-in pantry, 6kW split air conditioning, ceiling fans blinds, LED lights, dishwasher.

Total house area: 212.8m<sup>2</sup>



\*All images are for illustration purposes only. House and land packages are priced with standard inclusions. House and land sold separately. Purchasers will need to enter into a separate contract with the relevant builders for the construction of the home. Urbex gives no warranty and makes no representation as to the accuracy or sufficiency of any description, illustration or statement contained in this flyer and accepts no liability for any loss which may be suffered by any person who relies either wholly or in part upon the information presented. All information is subject to change without notice. Expires 1st February 2018



T: 1300 130 554  
W: [elwoodrise.com.au](http://elwoodrise.com.au)

urbex *designed for life.*